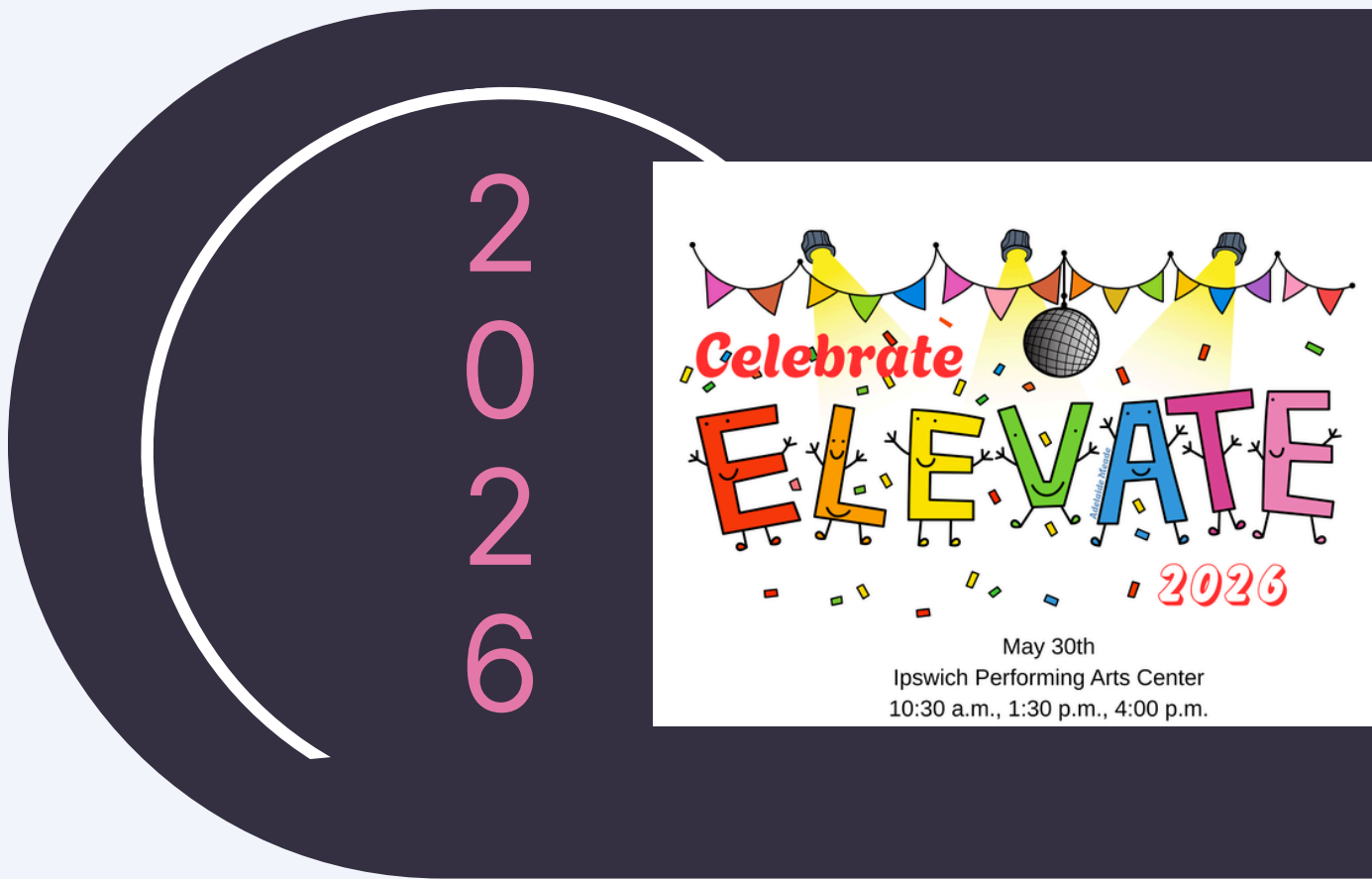




RECITAL 411



Dates, Schedules, and Details



Inside:

- | | | |
|----------------------------|-----------------------------|-------------------|
| 1.) Dates | 8.) Hair+Makeup Details | 13.) Summer Camps |
| 2.) Ticket Sales | 9.) Photo Days Info | |
| 3.) Show Details | 10.) Flower/Bear Order Info | |
| 4-5.) Dress Rehearsal Info | 11.) FAQ | |
| 6-7.) Show Day Info | 12.) Audition Info | |



Important Dates



- **March 7 @9am, Tickets go on sale online**
- **May 4-9, Costume Distribution Days**
- **May 23, Photo Day @Elevate**
- **NO regular classes recital week: 5/24-5/29**
- **May 26+27, Dress rehearsals @Ipswich HS**
- **May 30, Recitals: 10:30 a.m., 1:30 p.m. + 4:00 p.m.**

-
- There are NO classes after recital! Classes end on Saturday, May 23rd
 - Stay tuned for fun June workshops that your dancer won't want to miss!
 - Summer camps and classes begin Monday, July 13th
 - Fall registration opens in April; Fall classes begin Monday, September 14th!

What are 'Costume Distribution Days'?

During the week of May 4-9, every class will try on their recital costume in class and take them home! We ask that a grownup attends class with their dancer (if the dancer is under age 10). Teachers will go over costuming details and answer any questions you may have regarding the upcoming recital!





Recitals:

10:30 a.m.
1:30 p.m.
4:00 p.m.



Saturday
May 30th
Ipswich HS

HOW TO PURCHASE YOUR RECITAL TICKETS

A step-by-step guide to buying tickets online.

Ticket sales begin Saturday, March 7, at 9:00 a.m.

1

Know which show(s) your dancer is in!

DanceElevate.com/recital-2026

2

Login to the ticketing site:

Link from DanceElevate.com/recital-2026

3

Choose the showtime you plan to attend and choose your seats. You can add tickets to multiple shows into your cart before checking out. Double check your showtimes and seats before purchasing as there are no refunds or exchanges.

No tickets will be sold at the door!

Reserved seating.

Ticket cost is \$32.



MAY 30, 2026

10:30 A.M., 1:30 P.M. + 4:00 P.M.

IPSWICH PERFORMING ARTS CENTER

RECITAL 2026

WHAT SHOW IS MY DANCER IN?

Which show(s) am I in?!		
Find your class(es) below to figure out what shows you attend!		
Tickets on sale: March 7th, 9 am		
Saturday, May 30, 2026		
Ipswich Performing Arts Center		
10:30 a.m.	1:30 p.m.	4:00 p.m.
10:30 a.m. OPENING Tap/Jazz GR 1/2 TAP Preschool (WED) Kindercombo (MON) TAP Hard Times Awake My Soul Kindercombo (WED) Tap Ballet Gr. 1,2,3 (SAT) Diamond Jazz Hip-Hop GR 1/2 Mini Hip Hop (MON)	1:00 p.m. OPENING Tap/Jazz Gr. 4+5 (MON) TAP Preschool (THURS) Sapphire Contemporary Onyx Contemporary Emerald Tap Pearl Ballet Amethyst Jazz Ruby Ballet Modern 4+ Ballet 7	4:00 p.m. OPENING Pom/Jazz (MON) Tap/Jazz GR 3/4 TAP Tap 6+ Modern Select Acro 3/4 Acro 2/3 (MON) Hip-Hop gr 5 + 6 Hip-Hop gr 6+ Onyx Jazz Hip-Hop gr 3+4 Sapphire Ballet
Grownup+Me Show 1 Pointe 1 Preschool Acro Acro 1/2 (THURS) Kindercombo (MON) BALLETT Sapphire Jazz Kindercombo (WED) Ballet Onyx Tap Tap/Jazz GR 1/2 JAZZ Intro to Acro (THURS) Ruby Tap Amethyst/Emerald Ballet Onyx/Diamond Ballet	Grownup+Me Show 2 Acro 7/8 Tap/Jazz Gr. 4+5 (MON) JAZZ Pearl Tap Diamond Tap Emerald Jazz Sapphire Tap Acro 5/6 Ballet GR 4/5 Ruby Jazz Amethyst Contemporary Skeeters Finale (all dancers)	Grownup+Me Show 3 Diamond Contemporary Amethyst Tap Ballet 6+ Pointe 2/3 Emerald Contemporary Tap/Jazz GR 3/4 JAZZ Acro 4/5 Grow Birdwatchers Lyrical/Contemp gr 6+ Intersection Devyn Solo Lindsey Solo Taylor Solo

Families with dancers in multiple shows

TWO SHOWS:

Lucy Cirino	Shows 2+3
Emerson Fyrberg	Shows 2+3
Sophie Lampert	Shows 2+3
Esme Burnham	Shows 2+3
Finley Trask	Shows 1+2

ALL SHOWS:

Team Dancers

FAMILIES:

Meade, Shows 1+3	Lillian: Show 1, Adelaide: Show 3
Mello, Shows 1+2	Stella: Show 1, Camille: Show 2
Tomah, Shows 1+2	Remi: Show 1, Brooklyn: Show 2
Viana, Shows 1+3	Laura: Show 1, Giulia: Show 3



Dress Rehearsal

Our dress rehearsals this year are on

Tuesday, May 26th and Wednesday, May 27th.

Please look to see when your dancer rehearses and mark the dates on your calendars as it is extremely important that everyone attends!

Who: Everyone!

What: Dress rehearsal (come in costume with hair and makeup complete!)

Where: Ipswich High School Performing Arts Center

When: Tuesday, 5/26 and/or Wednesday, 5/27 (refer to schedule)

Why: So that dancers can practice on the big stage!

- Please make every effort to arrive on time and in costume, with hair and makeup complete. We are on a tight schedule and your cooperation is appreciated!
- After your dancer's last routine, you may leave the theater. Be sure you have all your costume pieces and dance shoes!

Arrival: 10 minutes prior to your dancer's first routine as noted on the dress rehearsal schedule

Dismissal: after your dancer's last routine

Where to report upon arrival: please come directly into the audience and sit with your class. We will call your dancer onstage when it is time for them to rehearse.

Is this a drop-off event? Not for most. Please plan to stay in the audience with your dancer if they are not at an age where they can be safely independent. We will be busy onstage and won't be able to watch any unattended children.



Dress Rehearsal Schedule

At Ipswich High School

Dress Rehearsal Schedules, Recital 2026, Elevate Dance Center

IPSWICH PERFORMING ARTS CENTER (Ipswich HS)

- Arrive 10 minutes before your first scheduled routine
- Upon arrival, come directly into the theater and find a seat
- You may leave after your last scheduled routine rehearses on the stage

FULL HAIR, MAKEUP, COSTUMES, DANCE SHOES!

Tuesday, 5/26/26

4:00	Theater opens for stretching/organizing
4:10	Preschool 3's + 4's (THURSDAY)
4:20	Kindercombo (MON) TAP
4:30	Preschool Acro
4:40	Tap/jazz GR 1/2 TAP
4:50	Tap 6+
5:00	Kindercombo (MON) BALLETT
5:10	Hip-Hop GR 1/2
5:20	Mini Hip Hop (MON)
5:30	Ballet 6+
5:40	Tap/Jazz GR 1/2 JAZZ
5:50	Intro to Acro (THURS)
6:00	Grownup+Me Show 1
6:10	Acro 1/2 (THURS)
6:20	Lyrical/Contemp gr 6+
6:30	Grownup+Me Show 2
6:40	Ballet Gr. 1,2,3 (SAT)
6:50	Pom/Jazz (MON)
7:00	Grownup+Me Show 3
7:10	Ruby Ballet
7:20	Hip-Hop gr 6+
7:30	Opening (all team)
7:40	Opening (all team)
7:50	Opening (all team)

Wednesday, 5/27/26

4:00	Theater opens for stretching/organizing
4:10	Kindercombo (WED) Tap
4:20	Preschool 3's + 4's (WEDNESDAY)
4:30	Kindercombo (WED) Ballet
4:40	Pearl Ballet
4:50	Tap/Jazz GR 3/4 TAP
5:00	Acro 2/3 (MON)
5:10	Tap/Jazz GR 3/4 JAZZ
5:20	Hip-Hop gr 5 + 6
5:30	Hip-Hop gr 3+4
5:40	Acro 3/4
5:50	Tap/Jazz Gr. 4+5 (MON) TAP
6:00	Acro 4/5
6:10	Tap/Jazz Gr. 4+5 (MON) JAZZ
6:20	Acro 5/6
6:30	Ballet GR 4/5
6:40	Opening (all team)
6:50	Opening (all team)
7:00	Acro 7/8
7:10	Modern 4+
7:20	Ballet 7
7:30	Sapphire Ballet
7:40	Amethyst/Emerald Ballet
7:50	Onyx/Diamond Ballet
8:00	Pointe 1
8:10	Pointe 2/3



Drop-off & Pick-up Procedures at Recital

If your dancer is in the 10:30 a.m. performance only...

- Check-in between 9:45 and 10:00 a.m. Please walk your dancer into Ipswich High School and retrieve your 'pick-up' bracelet. Make sure your dancer arrives in their first costume, with their hair and makeup already complete. Pack them a backpack filled with all their necessary dance shoes, extra tights, safety pins, bobby pins, etc. Also feel free to pack them anything to keep busy (but nothing messy or valuable!) Don't forget a water bottle and a healthy, nut-free snack. If they have a change of costume, please bring that costume on a hanger in a plastic bag or garment bag. You will hand off your dancer to our staff and you then you may wait for the theater to open. Enjoy the show!
- For pick-up after the Finale routine, please go to the area where you dropped off your dancer. Show your pick-up bracelet and you will have access to the holding area.
- Please note that everyone (including preschoolers) is in the Finale routine, which is the last routine of each recital. Please do not plan to get your dancer prior to the end of the recital (exception: Preschoolers may be picked up at intermission).
- Please be sure all of your dancer's items are labelled with their name!

If your dancer is in the 1:30 p.m. performance only...

- Check-in between 12:45-1:00 p.m. Please walk your dancer into Ipswich High School and retrieve your 'pick-up' bracelet. Make sure your dancer arrives in their first costume, with their hair and makeup already complete. Pack them a backpack filled with all their necessary dance shoes, extra tights, safety pins, bobby pins, etc. Also feel free to pack them anything to keep busy (but nothing messy or valuable!) Don't forget a water bottle and a healthy, nut-free snack. If they have a change of costume, please bring that costume on a hanger in a plastic bag or garment bag. You will hand off your dancer to our staff and you then you may wait for the theater to open. Enjoy the show!
- For pick-up after the Finale routine, please go to the area where you dropped off your dancer. Show your pick-up bracelet and you will have access to the holding area.
- Please note that everyone is in the Finale routine, which is the last routine of each recital. Please do not plan to get your dancer prior to the end of the recital (exception: Preschoolers may be picked up at intermission).
- Please be sure all of your dancer's items are labelled with their name!

If your dancer is in the 4:30 p.m. performance only...

- Check-in between 3:45 and 4:00 p.m. Please walk your dancer into Ipswich High School and retrieve your 'pick-up' bracelet. Make sure your dancer arrives in their first costume, with their hair and makeup already complete. Pack them a backpack filled with all their necessary dance shoes, extra tights, safety pins, bobby pins, etc. Also feel free to pack them anything to keep busy (but nothing messy or valuable!) Don't forget a water bottle and a healthy, nut-free snack. If they have a change of costume, please bring that costume on a hanger in a plastic bag or garment bag. You will hand off your dancer to our staff and you then you may wait for the theater to open. Enjoy the show!
- For pick-up after the Finale routine, please go to the area where you dropped off your dancer. Show your pick-up bracelet and you will have access to the holding area.
- Please note that everyone (including preschoolers) is in the Finale routine, which is the last routine of each recital. Please do not plan to get your dancer prior to the end of the recital (exception: Pearl Team dancers not in acro $\frac{2}{3}$ may be picked up at intermission).
- Please be sure all of your dancer's items are labelled with their name!



Drop-off & Pick-up Procedures at Recital, continued

If your dancer is in multiple performances...

- Please be mindful of the drop-off time for your dancer's shows by referencing the information on the previous page.
- If a dancer leaves between shows, please sign-out on the table outside the cafeteria.
- Parents with dancers in back-to-back shows have the option to leave your dancer with us between performances. Please only leave your dancer if they can be independent between performances. If you plan to leave them with us, be sure to send them with a nut-free lunch/snacks! We will ask students that stay with us between performances to remain in the cafeteria area, and change out of their costume into comfy clothes while eating. Thank you!
- Grownups with a bracelet may bring dancers food to eat between shows by coming to the cafeteria or the dancer's dressing room.
- Grownups with a bracelet are welcome to come to their dancer's dressing area between shows to help organize dance bags, costumes, etc., and get their dancer prepped for the subsequent performance.
- All dancers in back-to-back shows should be in the cafeteria area and not wandering around the theater.
- If your dancer is in the first show and the last show (and not the middle show), we request that you leave the theater until your next call-time to help us stay organized and keep track of who is with us at the theater.
- Follow the instructions on the previous page for drop-off procedures.



- Ipswich High School is located at 134 High Street in Ipswich, Massachusetts
- When you enter the doors, follow the hall to the left
- Take a right, down the stairs
- We will have a table set up to check your dancer in

We ask that all grownups say their goodbyes immediately after checking in and receiving your bracelet. We only let dancers past the table at drop-off for security reasons. Thank you for understanding!



Hair for Recital

Every female identifying dancer should have their hair in a middle-parted, low bun.

Please use gel and hairspray! We don't want any wispsies! Use bobby pins to secure the bun, and a hairnet helps keep flyaways at bay. Any headpieces/barrettes typically go to the right of the head, but check with your instructor to be sure!

Male identifying dancers should have a neat appearance.



Make-up for Recital



Stage lights wash out our features, so dancers wear makeup to better show their smiling faces! Please help your dancer apply a little makeup prior to arriving at photo days, dress rehearsal and recital. Please do not send your young dancer with lipstick they can easily access alone as they could take creative liberties with application :)

Lips: red

Eyes: brown palette

Male identifying dancers can wear a little powder and lip color if they choose but it is not mandatory.



— MAY 23 —

PICTURE DAY

\$50 per dancer / costume

— Session Includes —

Guided Posing with On-Site Dancer

2 High-Resolution Digital Images

Additional images made available for purchase.

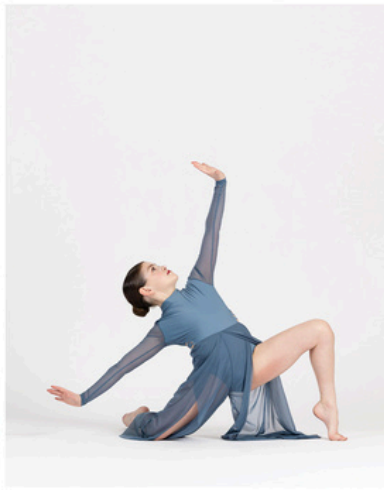
Reserve Your Spot

Signups go LIVE
4/23/26 @ 12:00 PM



Signups go LIVE
4/23/26 @ 12:00 PM

— scan to sign up —





Pre-Order Flowers & Bears for the Recital!

Pre-order your gift at
www.floracause.com/elevate

Or place your order by **SCANNING** this **BAR CODE**

Deadline to pre-order is the day before the recital @ 5 pm. Orders will be available for pickup at the recital (see flower table upon arrival). Extras will be available to buy at the recital. Pre-orders are preferred and guarantee your order.



PACKAGE DEAL DISCOUNT!
ADD a BEAR to your BOUQUET – and SAVE!

Products	Bouquet & Bear Package Deal Package Discount Price \$7 OFF
 Ballerina Bear \$20	 Short-Stem Mini Bqt & Bear Package —\$43— \$36
 Short-Stem Mini Bouquet \$23	 Long-Stem Rose Bqt & Bear Package —\$45— \$38
 Long-Stem Rose Bouquet \$25	 Long-Stem Mixed Bqt & Bear Package —\$47— \$40
 Long-Stem Mixed Bouquet \$27	



FAQ

How do I know what show my dancer is in?

In this packet, you will find a list of who is in which show.

When do tickets go on sale?

March 7th @9 a.m. - in this packet there is information on how to order tickets. Everything will be done online.

Are the dress rehearsals mandatory?

Yes! Dress rehearsal provides an opportunity for all dancers to rehearse their routines on the big stage! Doing this gives familiarity to the students and makes for a much smoother recital day!

Do we have to come to the photo days at the studio?

Photos are optional. If you would like to have your dancer's photo taken in their costume by a professional photographer, follow the link to book a photo slot on the 'Photo Information' page in this packet.

What is the procedure for dropping my dancer off at the recital?

In this packet there is a detailed information regarding drop-off and pick-up procedures for the recital day. If you still have questions, you can email hello@DanceElevate.com.

Where do I get the required tights and shoes for my dancer?

Locally, we recommend 'On Your Toes' in Peabody for tights and shoes.

How does my dancer need to wear their hair?

Every female identifying dancer will wear their hair in a center-parted low bun. Directions are within this packet. Male identifying dancers should have a neat appearance.

Does my dancer need to wear makeup?

Yes! Please reference the makeup tutorial within this packet for more information.

When do we bring costumes home?

There is a costume distribution week, May 4-9, where we ask a parent to attend class with their dancer to learn about their costume(s) and bring them home.

How long are the shows?

All shows are approximately 90 minutes with a 15 minute intermission.

Does my child have to do the finale routine?

Yes, all dancers are in the Finale routine! The finale is the last routine of each show and it is tradition for recitals to end with all of the dancers on the stage for a final bow. Dancers will wear their recital t-shirt over their costume, or they can pair it with comfortable bottoms (black leggings for example). If your dancer is in 'preschool 3's + 4's', they have the option of leaving at intermission, which would mean they would not participate in the finale.



AUDITIONS

Join the Elevate competition team!



2026-2027



- Grades K+
- Variety of commitment levels
- Well-rounded programming
- Excellent, professional faculty
- Competitive performance opportunities
- Technique-focused training

INFO SESSIONS:

Sunday, March 22nd, 1:15 p.m.
Sunday, April 12th, 1:15 p.m.

AUDITIONS:

Beginning April 1st
Email to schedule an evaluation class
Audition window ends May 23rd

Every dancer who wants to be considered for the '26-'27 team must fill out an intention form prior to May 15, 2026





**REGISTER
JAN 1**

Summer DANCE CAMPS

**AT ELEVATE DANCE CENTER
ROWLEY, MA**

FUN & CREATIVE!

- **DANCE, ART, + GAMES**
- **SHOWCASE PERFORMANCE ON FRIDAYS**
- **SPACE IS LIMITED!**
- **9:30 AM - 1:30 PM**
- **\$300 PER WEEK**

**DISNEY DANCING
7/13 - 7/17**

AGES 4-6

**BARBIE DREAM CAMP
7/27 - 7/31**

AGES 6-8

**K-POP KIDS CREW
8/3 - 8/7**

AGES 7-9

**FASHIONISTA
8/10 - 8/14**

AGES 8-10

\$100 non-refundable deposit is required to hold your spot
Balance is due 6/1/26



DanceElevate.com



32 FOREST RIDGE DRIVE ROWLEY, MA